

**Marulan Quarry Project**  
**Community Consultative Committee**  
**Eighth Meeting, Thursday 20/01/22**  
**6:30pm-8:30pm at the Marulan Community Hall**

**Attendees:**

Ian Colley (Independent Chair)  
Vergilio Serra (Global Quarries)  
Ankeedo Esho (Minute taker)  
Graeme Dally  
Wendy Dally  
Shane Hill  
Darryl Pearson  
Don Angelosante  
Bill Kenchington

Karl Rosen (GHD) on zoom  
Jahni Glasby (GHD) on zoom  
Lauren Harding  
Jeff Egan on zoom  
Chris Hargood (Goulburn Council) on zoom

**Apologies**

Stephanie Mowle and George Emerzidis

**The meeting started at 6:32pm**

Ian: Welcome everyone, we all know everyone here and on the zoom screen we have representatives from GHD and Jeff Egan, including Karl Rosen for a key presentation. We have Chris Hargood from Goulburn Council as Stephanie Mowles cannot be here today.

Wendy Presented an Acknowledgment of Country.

Ian acknowledged apologies for this meeting, and noted that minutes of the last meeting were post out in May

Graeme: A couple of corrections first – page 7, where Jeff is saying “give me a couple of weeks” it is ‘committee’ not ‘community’ he is talking about, and page 10, action 8 has not been completed yet because if you look at page 3 “power source still to be determined” so, you haven't completed it yet

Ian: anyone else have any issues with the previous minutes? Thanks. Most of the updates today will be from GHD and Jeff, and then a couple of presentations from community members.

## **GQ Update**

Vergilio: so Karl will speak in more detail about this, we have determined the site layout and the stockpiles and over burdens. now this layout is complete we can conduct more surveys. This is the main thing that happen from our last meeting. As you can understand it's not just placing stockpiles where you want, if we place it wherever we want it can affect something else, we'll need to go back and redesign which takes time

Karl: Vergilio has printed out some copies of the final design plan. The last 12 to 18 months has seen the ongoing development of the quarry design with the figure on the left is what was presented to the Department of Planning for the amendment to not use access on Winfarthing road and have access to Hume highway and to the right is the revised design plans . Graeme Edwards has developed some detailed quarry planning, stages 1 and 2, 12 to 15 years of the proposed project, calculating the amount of product and over-burden which is the unsellable material. What completed the design on the overburden emplacements. We have undertaken flood assessments in Narambulla Creek for a 100-year flood report, so any overburden placements will be not affected by flood, we will have a water management system to capture site runoff from any disturbed areas, for high rainfall events. The pit is positioned to maintain a buffer to the Hume Hwy and to minimize dust in blasting events and position the crusher, the processing and loading plant stockpiles to the north which will be away from the residents on Winfarthing Road.

Don: Have you been there lately and seen how much water is coming out. How are you going to control the water and the water coming out of the creek. you should go have a look.

Vergilio: Can you please let him finish his presentation

Karl: We have been progressing with the planning, in terms of the EIS, the studies are in various stages of completion. We are aiming to finish in the first half of this year. We have completed flood modeling estimates, we have developed the proposed drainage design. For biodiversity we have completed 4 field visits. For heritage we have undertaken a field survey with Aboriginal parties and other stakeholders who have participated in the field survey. We will do some test excavation with the Aboriginal parties, and the impact assessment is progressing. Some of the studies which are of particular interest to the local community such as noise modeling, we are working on developing the model for assessment. That's moving forward and noting that we are doing a health risk assessment which is not required in the SIA. It will address crystalline silica to consider any risk to the community. The bush fire assessment studies are continuing to progress

Karl: any questions?

Don: there's no use to talk to you

Wendy: there's been a La Nina effect which has brought a huge amount of rain in a very short period of time. We have had very heavy rainfall and remember we are not a flat country, we are all hills. Now you guys can press a button wherever you are and say here's the 100-year flood. But there's climate change, there is La Nina and that has not been taken in account. We can a lot of water in a short period of time. We've been trying to tell you for the past 3 years. I don't like the way you treat Don. If you have given him an answer 3 years ago, we would not have brought it up this many times.

Ian: So Karl, a big question here is about rainfall especially with issues like La Nina and climate change uncertainty, what is the response to these concerns?

Don: what I'm worried about is you spending a lot of money on this and getting washed away in the Dam.

Vergilio: we have done the 100-year flood report. The thing we can talk about is how they are doing the report and what does it actually capture.

Karl: The studies do take climate change into account. Basically, we need to complete the investigation to present the results and have the detailed studies of events and you will be able to review that interpretation and put in a submission to respond to it.

Wendy: that must be fine, but you need to be here.

Karl: we need to have a detailed studies completed and then you can review them.

Darryl: Have you guys been on site when the deluges have happened. In the last 6 months the creek has been flooding constantly, I don't understand how you guys don't have someone on site.

Wendy: what you guys need is to record the rainfall and how strong the rain has been, I don't understand how you don't have the weather station over here. Our weather reports are coming from Goulburn airport. Don has trying to tell you from way back this is what is happening here but you treat him terribly.

Shane: Where was the modeling data taken? Goulburn, Marulan? Can we leave this with you Vergilio to get back to us

Don: We want information all the time we don't want to be left in the dark.

Ian: that's what today is about Don

Shane: We have this 1 in 100-year flood, I've seen it 3 times this year. At least 4 time the water has been brushing under the bridge. That's a lot of water coming down all 5 creeks

Graeme: Did you say the studies will be completed in the first half of this year?

Karl: Yes, that's the program

Vergilio: Unfortunately, the biodiversity people were not local, so Covid had restricted us to some degree. The biodiversity studies could have been done sooner, if that was not the case. but this happens. We are not trying to delay this, it cost us money. We want this to get done just like you.

Shane: People need to stop blaming covid, cause there a lot of quarries here that have done their planning studies during covid.

Karl: We need to make sure we have the full survey covered, with covid we have had heritage specialists staff that were interstate.

Wendy: Tell me how Jarra got through so quick, they have had community meetings in a couple weeks. There is a brand-new quarry up the coast started way after us and it's done, it's through, why are we waiting 3 years.

Shane: It's been 3 years and you only got to this stage, and other people got to this stage in 1 year

Darryl: What is happening with Trig station

Vergilio: We are going to the process to buy that land.

Darryl: So what's your plan of attack. Anyone can purchase it.

Vergilio: there's a process you need to through, before you purchase Crown Land. You need to provide legitimate reason for the purchase, we must get in contact with Crown Land. They assess it and if its legitimate. I sent them an email unfortunately it is taking a while, it takes long to hear back from them sometimes a month or two.

Darryl: if that doesn't go ahead are you going to go with the other section?

Bill: Do you own that land in the red or are you leasing it?

Vergilio: Leasing

Don: There's a lot of highway accidents, how does the truck get safely across the highway to get back to Sydney?

Vergilio: The question is how the trucks gets across the Highway safely?

Shane: Do you have a copy of the traffic movement plan

Vergilio: It is still being reviewed by the RMS

Don: Have RMS agreed with what your proposal?

Vergilio: We need more detailed design with an acceleration lane

Don: So you must give us information in writing so we know what is happening. It's in our area and we just want information. To me this is great information (the draft handouts)

Vergilio: We sat with RMS and showed them the concept. They said yes, in theory it's good, but needs more detail design.

Ian: So, no formal approval as of yet.

Shane: We need the drafts so that we can double check the gradient and send it back to you. That's the whole point of communication

Karl: (sharing his screen) the de-acceleration lane is 200meters, the acceleration is 595m with 1.5 m shoulder

Ian: can we share that Karl?

Karl: Sure.

**ACTION 1: Karl will send out the highway plan, showing exit and entry off Winfarthing road**

Wendy: Vergilio that's all good and flat, but that is a hill.

Vergilio: We have taken that into account.

Wendy: Have you seen how the traffic is there, don't assume we don't know anything. Use the locals. We know the traffic; we want to be safe. We are going to be using the road. Trucks will need to speed up to get up the hill. Now has that been taken into account? Has anyone sat down and done a visual on what happens?

Don: Karl what happens is when the trucks stop? it takes a long time for the truck to speed up. That is one of our biggest problems.

Darryl: What happens when a truck breaks down?

Graeme: How long is the acceleration lane?

Karl: 595m

Bill: I've noticed the draft you given us is dated last year 15 April 2021 , why is it taken so long to get to us?

Vergilio: That's a drafting error, I can show you an email that it is new.

Ian: I would like to invite our other GHD presenters now.

Lauren: We have come to listen to the conversation and talk about the social impact assessment, Jahni has been on this for a couple of years just wanted to share that the assessment has new guidelines from July last year. They cover a broad range of projects. We wanted to share the purpose of the SIA as to identify and elevate the likely impact of a project to the community who live and work and visit the area. We need to review the findings of the early studies; to try and understand how people will be affected by the project. It's a two-step process from 2019, we are now getting to the end of the EIS, I mentioned the consultation outline, that is an important part of the study, we will be conducting interviews with the stakeholders in the coming months.

Jahni: It is so important to engage with the community that is impacted, we can focus on the scope on the SIA and the values from the community, we are looking to engage with government, local services etc, to we will work closely with Global Quarries and Jeff Egan, to make sure we are building on the wider engagement, identify those issues and dive deeper into these. In this meeting we are keen to understand all of your concerns and understand how you will be affected and how you guys feel.

Lauren: we have some questions

*(At this point, the zoom link was too hard to hear, so the Chairperson decided not to proceed with a two way interaction between the GHD reps and community members in the room but suggested GHD talk directly with the members one-to-one).*

Bill: are we talking about having a face to face with these people?

Graeme: Can we get a copy of those slides? There has been no past social assessment, you talked about Marulan and Tarren in that survey assessment, you didn't talk to the local people, you are building the assessment on something that is false.

## **ACTION 2: Forward slides of the presentations to members of the CCC**

Vergilio: We contacted the Marulan post office and distributed over 820 letters

Wendy: We are in the middle, our mail is out in Goulburn, we are our own community. Marulan forgets we are a part of them. We are a unique community. I don't think you guys get it through your heads that's why we get p'd off. They don't understand that it concerns us not people in Marulan.

Ian: The big message is that there is not enough consultation, and people are asking for more frequent and direct face to face communication .

Wendy: It's a little too late, should have been done 3 years ago

Shane: We got our Facebook set up, people are asking what's happening with the quarry, why is it not done?

Vergilio: We didn't have the answers back then.

Shane: Do you have someone from state planning represented?

Graeme: It was a poor SIA that triggered the CCC.

Shane: You guys are on our doorstep, that's why you need to work with us. We need to sit down and come to a resolution and find out how this can work out for both of us

Don: I'm only 1 km away from the blast, who is going to check my house foundations when you blast?

Ian: You have raised this question before

Wendy: And he's getting no answer

Darryl: We have raised 350 issues, are they being passed on to GHD?

Karl: When we initiated the discussion with the Department, we hosted them in our office to go through the process and it was accepted. The fact was that our SIA got plagiarized on a separate project. It is a balancing act. I can completely understand that it is frustrating for the locals, we have Lauren here to

understand your issues and it will get presented in the SIA, it will get incorporated into the documentation. We don't make the determination on the project. Lauren runs through the SIA process along with the latest SIA guidelines. Completing the studies, any member of the CCC will have the opportunity to write a submission regarding any issues.

Don: Why don't you come and look at our houses? Check how they are before the blasting starts. I'm gonna have engineers come do studies. If I get a crack, I will be suing you guys for damage. How far does the blast go through the ground?

Ian: I suggest that we don't do Q&A with Jahni and Lauren given the difficulties we're having with audio.

Darryl: 350 questions we have asked, when are these going to be answered?

Vergilio: So, you guys have not received the letters?

Graeme: No, we haven't.

Ian: Can we fix this up outside of the meeting?

Vergilio: Yes.

**ACTION 3: Vergilio to follow up with survey to these local residents on Winfarthing Rd.**

Graeme: When can we have a face to face meeting

Vergilio: It's very hard to say right now

Jeff: I'll make a few brief comments, the consultation process, and communication, covid has made it difficult to travel down to Marulan, and lockdown.

EVERYONE: Can't hear Jeff, we will talk to him next time.

Ian: (To Jeff) We will need to postpone your presentation because we can't hear you. There is also a very strong call for more direct face to face communication with local residents. I'll note that as an action (for Jeff and GHD).

**ACTION 4: Jeff and GHD to respond to the calls for more direct and frequent communication with local residents.**

Wendy: This is ridiculous, they should have been down here tonight.

Graeme: Since November 2020, Jeff Egan was employed by GQ to improve the communication but there are still 350 unanswered questions. I expect a response in writing to the points I have raised.

*(NB See soft copy of Graeme's full presentation attached below – Ian Colley. The note addresses*

- 1. Detailed review of failures in the communication promises and subsequent activities measures against the principles announced by Jeff Egan*
- 2. Additional comments on the length of time to undertake studies in preparing the EIS*
- 3. Questions about the possible extension of time to complete the EIS)*

As part of the presentation, Graeme presented a number of questions

1. When will you be actually be submitting your EIS & DA?
2. If passed 10<sup>th</sup> March (as indicated – email IC) have you or are you applying for an extension? What grounds?
3. Why was survey given to residents over 10 km from quarry site and not those who will be directly impacted? Will you be surveying us locals?
4. Why have you leased the 7 blocks of land when firmly told us you hadn't?

Wendy: We have two people we talk to in state planning

Graeme: Have you extended from the 10th of March?

Don: Don't just talk to us but give us information

Ian: Will your respond in writing with draft information as it becomes available?

Vergilio: yes

**ACTION 5: Vergilio to respond in writing with relevant information in draft form when it becomes available**

Wendy: it's my turn for the emotional speech, as a professional in a teaching career, I'm at a loss for words to describe how GQ and GHD have dealt with the community. I've been a professional in my working life, but it is extremely difficult to do that here. I appreciate you sitting here but you are not understanding, the message is not getting through. Everyone is stressed because there is no information. We have been in contact with everyone we can so we can give them information. But we have none. You have given us no indication that you will care for the environment and culture and how you are going to protect this area. I feel like it going to be a disaster. The second you put the VENM in the water, everything will die. I'm concerned you're not looking. I've got no confidence in Karl.

*(NB the full version of Wendy's presentation is attached below – Ian Colley)*

Graeme: There is a quarry up the coast, who completed this process in only 9 months

Wendy: There are other quarries around here that have way more money and machinery, I don't know what you guys think what you can do, you are not thinking locally, you are more concerned in making money. Think local, no I don't think so. You can use other forms of aggregate, like glass or recycling. if you want to be a part of the community. I don't think you can. We don't even know the name of the new partner. There is another investment up the road and a Chinese guy that is in all sorts of trouble. It's a worry when we don't know who the other partner is, it's sus. The values you expect in neighbor is trust, love, we have that in this community. We are a community of people. Due to the quarry, people are scared to open business, prices drop. It's an E3 zone out there, with endangered species. I'm sorry you will sit here until midnight, you need to listen. I've got cancer and I'm dying. Three years of this and I'm not going to let you guys win. We want to know everything. We want to know that the animals are not going to be frightened when the blasts happen.



Ian: I get it, I get the frustration.

Bill: I'll try and brief, my wife and I purchased the property on Winfarthing Rd in 1977. It's been great for four generations of our family, we will be GQ's closest neighbors. There is a lack of communication from GQ, even with the CCC there is little communication. We have been advised a number of times that this EIS will come out but we have got nothing. You told us tonight it will be mid this year. GQ by their own admission have never done a quarry before which raises questions for me. Surely after three years some or all of the questions would have been answered. I requested to Ian to receive a summary of the reports. I have not seen them yet. What has happened to the reports promised for the 9th of November meeting? Over the past three years, the real question is does GQ know what they are doing or they are keeping us in the dark. While this might be a small quarry it has the potential to be a large disaster for the locals.

*(A copy of Bill's presentation is attached below)*

Vergilio: I appreciate everyone's taking the time to note these concerns and I am writing everything down.

Shane: I want to add one thing. A lot of people here are old and want to retire, you come on their doorstep and throw shit in the face. The silica dust and noise will affect everyone on the street.

Vergilio: So my summary is that traffic noise, blasting, EIS, social impact, are the main issues

Shane: And mental stress. There are people that have died on this street because of the stress. It is taking too long, 3 years.

Wendy: Who cops it? it's not you. It's us

Ian: I am sure GQ gets this, it has been 3 years. I am hearing that people want to see draft information even before the formal reports are completed.

Don: Give us the information even it's a draft

Shane: Email out draft information to us so we can identify issues you might not even see.

Graeme: In the last 3 to 5 months you have made have made studies – on traffic, blasting, dust, VENM

Don: Ask Karl to talk to us face to face

Vergilio: Karl did not feel comfortable to come down currently because of Covid.

Wendy: Are you serious?! I'm on chemo and I got masks.

Ian: A question for me is about the decision as to when to hold another meeting. Members have consistently complained at these meetings about the lack of information, but GQ has noted that the studies are still not completed. Do we now wait for that information before we have another meeting?

Wendy: Vergilio what do you think?

Vergilio: I think we should wait because I don't like this back and forth in the absence of answers to your questions.

Don: Vergilio why don't you come past one day and have a look.

Vergilio: It was planned but covid stopped it, like the bbq.

Bill: Can you give us a summary of the presentations?

Shane: Vergilio you need to go back and work out everything, surely you won't need a month, can you let us know by the end of this month so we can plan the next meeting.

Wendy: It's your fault for you not working with us from the start

Darryl: The minutes get forwarded to the department of planning

Vergilio: Yes they get reviewed by planning.

Don: See you later *(Don leaves the room)*

Vergilio: We had a meeting with the Department this week, we are in contact with them.

Graeme: 30 May 2021 was the due date of the EIS but that didn't not happen and now they are saying it's the 10th of March 2022. And now you are saying it's going to be completed by the end of June.

Karl: We are in regular contact with planning, the details are updated on the portal for Department of planning to assess. We keep them up to date with the progress. I will get on the portal and update them.

Ian: Is there a close date or does the portal update effectively grant an extension of time for the EIS?

Vergilio: is there an expiry date on the SIAs Karl?

Karl: It's 2 years, if not submitted by then, then we keep in contact with the Department.

Graeme: Your EIS was due 30th May last year, you applied for an extension, but you didn't tell us, which means we don't trust you. The whole system is crap, and we don't trust you. My wife has cancer and is dying. We are sick of GQ and GHD.

Shane: As representatives of Winfarthing Rd, they have had enough.

Wendy: Everyone knows what going on, we make it simple for them, but the message is not going through to you.

Ian: We will let you know when the next meeting is scheduled.

Wendy: I'm sorry Vergilio but you need to hear. We wanted to set up a nature business. That was 4 years ago, listening to birds chirping, smelling the bush, we can't do that now and continue to invest in that when there's a quarry here. We going to have explosions, silica dust, how are we going to have people there, people won't do that if there's dust in the air. Even if it's a minute amount of dust. How does GQ get to do what they want but we don't. I can't do what I want with Graeme, what do you think this is doing to us. We have family living here. If you guys do this we will have to sell our property and we won't be able to find something like it. We built it from the mud of this land. You are not giving back to the community, we have no idea, other quarries give, playgrounds, fire department, GQ give nothing but want to just take. who gave you guys the right to come here and stuff our lives up

Ian: Thanks Wendy, okay I think it's time to call this meeting to a finish. Thank you everyone. I'll advise when the next meeting is scheduled, hopefully with more information that GQ can share about the proposal.

### **8:42 meeting ended**

### **Actions to be completed**

#### *Eighth Meeting*

**Action 1:** Karl will send out the highway plan, exit and entry off Winfarthing road.

**Action 2:** Slide presentations from this meeting will be sent to members of the CCC.

**Action 3 :** Vergilio to follow up with survey to local residents on Winfarthing Rd.

**Action 4:** Vergilio for GQ to respond in writing with relevant information in draft form when it becomes available.

**Action 5:** Jeff and GHD to respond to the calls for more direct and frequent communication with local residents.

#### *Seventh Meeting*

**Action 2:** Add these further items to the actions from Meeting 6: Karl to update bushfire assessment, and include the stockpiles on the quarry map, and add the right hand turn exit onto the map with the stockpiles).

#### *Sixth Meeting*

**Action 1:** VS check for inconsistencies and gaps in the information document handed out last meeting (such as contradictory statements on the trig station).

**Action 2 – VS** to supply the visibility study when completed

#### *Fifth Meeting*

**Action 1** VS to consider meeting with NOW Inc, subject to Covid advice.

**Action 2** (this action item rephrased for clarity) VS to supply its local contact list to NOW and to contact people to participate in the second SIA.

### *First Meeting*

**Action 6** The EIS report will be made available when completed.

**Action 8** GQ will clarify power source to members.

**Action 9** GQ to provide details of insurance once approval is granted.

### **Attachments**

Presentations from GHD  
Map handed out at the meeting  
Presentations from Graeme, Wendy and Bill

## **COMMUNICATION**

Just so it is on the record, the CCC is meeting today, for only the second time in the last 14 months. Unfortunately meeting organization was left to Global Quarries as they told the November 2020 meeting that their EIS would be submitted to State Planning in January 2021.

Jeff Egan, was engaged to “improve’ the communication between GQ and the local community. Community members of the CCC consider that as we have submitted over 350 concerns with GQ, any improvement need to come from GQ and GHD.

### **Communication Principles**

These were developed by Jeff Egan and distributed to the CCC members and the community after the 7<sup>th</sup> meeting of the CCC on 6<sup>th</sup> May 2021.

The principles are listed following, and then, how GQ/ GHD has ignored or forgotten them in respect to Community CCC members & the local community as of 19<sup>th</sup> January 2022.

- 1. Ensure the community has access to accurate information once it becomes available.**
  - Failed to inform CCC that the expiry date for their Environmental Impact Statement (EIS) submission had been extended. Submission date was 13<sup>th</sup> May 2021, 1 week after our 7<sup>th</sup> meeting. According to State Planning (Mr. Carl Dumpleton) GQ/ GHD applied/ notified State Planning before May 2021.
  - Failed to inform the CCC or local residents that they would not be submitting their EIS as they indicated – November 2021. GQ have indicated that they were prepared to submit

their EIS a total of 7 different times over the last 35 months. (According to an email from Ian Colley, they anticipate that their studies will be completed by April 2022 and CCC members will receive a copy before formal exhibition. Is this number 8?).

- Failed to distribute to any of the local community, a survey they letterbox dropped in late 2021 (December?). Instead, they distributed it to residents along Brayton Road, Marulan, over 10km from their Quarry site.
- Failed to provide documentation to CCC members that was given to Aboriginal groups re Aboriginal Study on 4<sup>th</sup> June 2021, a few weeks after CCC 7<sup>th</sup> meeting. GQ has stated that once information becomes available, they will give the CCC members a copy.
- Repeatedly failed (as agreed) to post documentation to a CCC member who does not have the internet or a smart phone.
- At the 7<sup>th</sup> meeting G.Q. provided an updated Global Quarries Marulan Current Progress report number 2. There was minimal explanation to this report which had individual progress reports deleted compared to the original, reduction in % completed in others, mixed up the order positions, combined some, changed names and added some. It was impossible for community members to understand, let alone comment on this Progress Report, at the meeting. When providing this type of progress report, you are resorting to obfuscation.
- Failure to provide summary information to CCC members that GQ was prepared to give out at the postponed December meeting when requested.
- Provided at the 7<sup>th</sup> meeting a map indicating blocks of land leased by GQ – 7 in total. Up until this map was distributed the local community and CCC members were told that they were leasing 2 blocks of land. At best GQ is not aware of what they are leasing or are they trying to confuse us?

## **2. Respond to enquiries in a timely manner**

- Failed to provide/refuse documentation when requested re extension of submission date for their EIS.
- Failed to respond, as indicated, re access for Jennie Gordon to Quarry site so that she could complete her response to the Aboriginal study.
- When commenting on the Communication Principles, Graeme & Wendy Dally raised the issue of consultation and that it should be included in the principles – this hasn't been acknowledged or addressed.
- No response to concerns re BBQ. A person from Sydney hand delivered a cancellation note when Sydney was in lockdown.

## **3. Deliver opportunities for meaningful two-way communication between the Project Team and the Community.**

- Failed to organize any CCC meetings, as they indicated they would, after the 7<sup>th</sup> meeting. GQ, after enquiries and suggestions to the Chairman of the CCC by Community members, scheduled a meeting for 9<sup>th</sup> December 2021, but given the time of year, this was unsuitable for many.
- Failed to notify the CCC chairman of the engagement of Mr. Jeff Egan, (Community Engagement Consultant) to enable his attendance at 7<sup>th</sup> meeting to be listed on the agenda, giving community members the opportunity to discuss his role before the meeting.

- Failed to provide regular updates, (from 7<sup>th</sup> meeting) as they had indicated they would, except for one newsletter, letterbox dropped on 22<sup>nd</sup> June 2021.
- No discussion re proposed “community working groups”. The 7<sup>th</sup> meeting agreed that after the Communication Guidelines/ principles were finalised, the CCC would then consider specific actions (minutes). These are a duplication of the CCC.
- After concerns were raised re the implementation of the Communication Principles, Jeff Egan wanted to discuss these with the individuals concerned. This was rejected as this affected the whole CCC as well as the local community. A request was made to discuss this at the next CCC meeting but no meeting organized.

#### **4. Honour commitments made by the project team.**

- The CCC was to discuss specific actions following the acceptance of the Communication principles. This was agreed to by the whole CCC. This agreement was ignored.
- No action re Vergilio Serra to consider meeting with Neighbours of Winfarthing Inc.(NoW), local businesses and individual property owners –( 5<sup>th</sup> CCC meeting)
- No action re Vergilio Serra to supply contact list to NoW Inc to facilitate community involvement in 2<sup>nd</sup> Social Impact Assessment (5<sup>th</sup> meeting)
- No action re checking of inconsistencies and gaps in information handed to CCC members at 5<sup>th</sup> meeting.
- Failure to provide regular updates as indicated in email from VS, (1 provided) up until EIS is submitted (10<sup>th</sup> June 2021 email)
- Failure to organize regular CCC meetings since the 7<sup>th</sup> meeting (or communicate inability to have meetings)
- Failure to submit their EIS when told they would, 7 times.
- Failure to inform the local community of site inspections by interested Aboriginal people. GQ had guaranteed that if anyone was going onto the site then they would inform the locals.

#### **5. Promote regular ongoing communication.**

- Failure for the last 14 months to keep community CCC members informed of anything, apart from Communication guidelines, one newsletter and the ill-conceived, unorganised and aborted BBQ.

### **Conclusions**

- It seems that GQ/GHD are attempting to “tick boxes” for their SEARs requirements.
- If GQ don’t supply us with any information then we cannot comment/research/ consult. Keeping us in the dark.
- A survey distributed to recipients not living near or familiar with the Marulan Quarry proposal is deceptive and will result in invalid/biased/ill-considered and ill-informed data.
- These “working Parties” are a way of divide and conquer. They are a duplication of the CCC and any new information coming from them, if they are even formed, would be a distraction.
- By providing the minimal information that we have received and then indicate that it is to be changed is a tactic to obscure and confuse. E.g. road access, quarry layout, progress reports, leased land.

- Consultation is minimal as concerns / issues raised by the community CCC members are mostly, we are told, taken on board and to be included in their EIS, thus avoiding a response or discussion.
- The due date for GQ's EIS is, according to State Planning, 10<sup>th</sup> March 2022. How can they have their studies completed by April and submit their EIS in March? Will GQ be applying for / notifying State Planning of another extension to the due date?
- If the new Deep Creek Quarry in the Mid Coast Local Government Area can have their SEARs issued on 19<sup>th</sup> February 2021 and their EIS completed by 4<sup>th</sup> November 2021 and the exhibition period from 19<sup>th</sup> November 2021 – 17<sup>th</sup> December 2021 (9 months), why has GQ taken 32 months so far with no indication when their EIS/DA will be completed? Are they and GHD overworked, understaffed, lack training & knowledge, incompetent, consider the project a low priority or other?
- Some of the terminology used by the Department of Planning includes-
  - Effective and genuine community consultation
  - Comprehensively open and transparent communication
  - “..... discussions with the local community, including via the Neighbours of Winfarthing Inc and the projects Community Consultative Committee.” (SEARs cover letter 10-3-2020.)

We consider that this hasn't been happening.

If Global Quarries can't get the little things right, we have no confidence that they will be able to get the big things right, if their application for a quarry is approved.

Graeme Dally  
 President  
 Neighbours of Winfarthing Inc.  
 19<sup>th</sup> January 2022

## SUMMARY – MEETING PRESENTATION 20<sup>th</sup> JANUARY 2022. Graeme Dally

Tabling document detailing my presentation & will talk to it.

I don't expect a response to all concerns raised, tonight, but some do need to be answered - detail at end.

Since November 2020, GQ responsible, along with IC in organizing meetings – this is 2<sup>nd</sup> in 14 months.  
**POOR**

Jeff Egan employed to “improve” communication – 350 concerns raised **GQ/GHD need to improve.**

Taking the 5 Communication principles.

### **1. Ensure the community has access to accurate information once it becomes available.**

- Failed to inform us of EIS & DA extension –13<sup>th</sup> May 2021- 10<sup>th</sup> March 2022, - occurred before last meeting.
- Failed to inform us of non-submissions of EIS and DA January & November 2021. Were latest 2
- Failed to inform or give us a copy of Survey in December 2021 & deceptively giving to residents on Brayton Rd, over 10km away.
- At the 7<sup>th</sup> meeting G.Q. provided an updated Global Quarries Marulan Current Progress Report, number 2. There was minimal explanation to this report which had individual progress reports deleted compared to the original, reduction in % completed in others, mixed up the order positions, combined some, changed names and added some. It was impossible for community members to understand, let alone comment on this Progress Report, at the meeting. When providing this type of progress report, this is **obfuscation**.
- I had raised the issue of GQ leasing more than the 2 blocks indicated in documentation- apologized my error. Last meeting map with 7 blocks leased. **At best, failed to tell us, at worst deceitful.**

### **2. Respond to enquiries in a timely manner**

- Failure to provide documentation re extension when requested.

### **3. Deliver opportunities for meaningful two-way communication between the Project Team and the Community.**

- Ignored decision of 7<sup>th</sup> meeting “... to consider specific actions ..” re Communication guidelines & working groups.

### **4. Honour commitments made by the project team.**

- 7 times GQ was to submit EIS & DA, but didn't – no notification to CCC/ local community- REPEAT

### **5. Promote regular ongoing communication.**

- Over 14 months 1 CCC meeting, 1 newsletter and aborted BBQ. In 8 months -is this your idea of regular?

GQ/GHD need to read and respond to this document, but obviously not tonight.



**However, there are some questions that do need to be answered tonight.**

5. When will you be actually be submitting your EIS & DA?
6. If passed 10<sup>th</sup> March (as indicated – email IC) have you or are you applying for an extension? What grounds?
7. Why was survey given to residents over 10 km from quarry site and not those who will be directly impacted? Will you be surveying us locals?
8. Why have you leased the 7 blocks of land when firmly told us you hadn't?

State Planning expectations are :-

- “effective and genuine community consultation”
- “comprehensively open and transparent communication”

WHEN WILL WE GET THIS???

## Wendy Dally presentation

As a professional and an advocate for the disenfranchised I reflect over the last 3 years. I am at a loss to put words to describe my feelings about how GQ/GHD have dealt with our community.

Where am I now?

Extremely stressed and disillusioned with the behaviour of both GHD/GQ, they have given us no indication of how they will care for the local environment and culture or how they plan to protect it. We are not even aware that they understand the value of the area for future generations. You are not thinking locally, let alone globally.

If they want to become part of our community, I'm afraid that they have been on a steep sliding downwards slope. The behaviour of GQ/GHD is not what a good neighbour would be doing. We still do not even know the name of the new partner- does that sound odd- yes- are we another investment by the Chinese investor who was trying to put a recycling plant in Moss vale? Who knows – we don't? Some of the values you expect in a good neighbour are trust, honesty, respect and responsibility – do we have this in GQ/GHD?

Due to the uncertainty and information about the quarry and it's affect on the environment, residents are in a dilemma concerning renovations, sale, setting up businesses and encouraging families to move here- this is an emotional and financial gamble, whichever way you choose. Why are you able to affect our choices and impact on our financial stability so you can make your money and leave.

Our plan on retirement was to start a business based on allowing people to undertake workshops in our bush environment surrounded by flora and fauna and enveloped by the smell and sounds of the bush. Our ethos and values are to involve those attending in discussions about climate change and protection of our flora and fauna. We have now the ideal workplace- an E3 zone, animal corridor, land 4 Wildlife and a likeminded community.

The quarry plan has put a stop to this – how can we plan when we have no idea if this plan can be implemented. Our business was registered 4 years ago.

The negative ramifications of the quarry are noise – not natural, silica dust- exposing clients, visual pollution – scar on the landscape, ethos- not aligned with conservation and recycling. Am I really angry that you may be able to do what you want but I can't? – yes

I must here reflect on the number of quarries already in this area that are better suited to future State needs. They have far greater capacity and life spans that the proposed Marulan Quarry. These quarries use up to date technology and forward thinking that takes into account the environment, rail transport, global needs and trends. The development of the use of by-products and recycled glass as aggregate has reduced the need for this aggregate.

Attachment from Bill Kenchington presentation at the meeting

REPORT TO JANUARY 2022 GLOBAL QUARRIES COMMUNITY CONSULTATIVE COMMITTEE MEETING

- 1) I am totally opposed to this quarry development for reasons stated below:-
- 2) My wife and I purchased our property in Winfarthing Road way back in 1977. It has been a great recreation place for 4 generations of our family and we have experienced many happy occasions during that time in this great environment.
- 3) As our property is located across the road from this proposed development, we would be one of Global Quarries (GQ) closest neighbours. After some 45 years the last thing we want is someone to set up this rock quarry and disturb our way of life.
- 4) It has been 3 years since we found out about the GQ proposal. In that time no approach has ever been made by GQ that they wish to come and meet with us to discuss likely impacts or allay any fears we might have with this proposed development.
- 5) My understanding is that because there was a lack of community consultation by GQ from when the proposal was announced, the Government forced GQ to form a Community Consultative Committee (CCC). Even with the formation of the CCC there has continued to be little to nil consultation.
- 6) Since the formation of the CCC we have been advised on a number of occasions that the EIS will be released by a certain time(s) but it has never been forthcoming.
- 7) The latest advice (January 2022) is that the studies for the EIS will be available April 2022. It is assumed that the EIS Exhibition will follow soon after.
- 8) I was employed in the road construction industry (including major motorways) for some 30 years and have an appreciation of the fears the owners of neighbouring properties might have if the development is not executed or seen to be executed in a professional manner.
- 9) GQ by their own admission have never embarked on a quarry project before. From my experience this has sent alarm bells to me. Are they “Cowboys” or what?
- 10) The CCC has raised many questions and concerns over these 3 years with very few answers being provided. Those responses that have been provided have been often unsatisfactory, being inconclusive and demanding further questions.

11) When questioned as to when we might receive satisfactory answers, the response has always been that your questions will be answered as soon as the studies/reports are complete. Surely after 3 years some if not all of the studies would have been completed. Our patience is wearing thin.

12) Ian Colley's email of 9 November 2021 advised "After a long wait since our last meeting, GQ has indicated that it would be ready to present summary information on the various study reports. I'd like to schedule the next CCC meeting for Thursday December 9th at the Marulan Community Hall (6.30-8.30pm)." As this meeting was not to eventuate, I requested in my email to Ian Colley on 11 November 2021 that the CCC members be provided with a copy of those summary reports. We are still awaiting these reports.

13) Ian Colley's email of 13 January 2022 advised "At this stage, GQ and GHD have not completed the various studies for the EIS, so this meeting will be more of an update briefing than a comprehensive summary. GQ and GHD have notified me that they anticipate that the studies will be completed around April this year, and CCC members will receive the report before the formal EIS exhibition. "

14) What has happened with the reports referred to in Ian Colley's email of 9 November 2021. Why can't they be presented at the proposed January meeting?

15) GQ over the past 3 years have not demonstrated to us that we should welcome this proposed quarry development.

16) Questions should now be asked as whether GQ know what they are doing. Is their lack of answers because they don't know what they are doing or is it a deliberate ploy to keep their "neighbours in the dark", with the attitude "less you know the better it is for GQ"?

17) There are many issues of concern to me as an immediate neighbour that need resolving. Briefly they are traffic congestion and safety, noise, water and air pollution, blasting effects, unknown and potentially toxic imported material, property values and the list goes on.

18) Very importantly we have never seen GQ's principal at any of our CCC meetings to demonstrate that they wish to have us on board and be good neighbours to us.

19) Whilst this maybe a small quarry development proposal compared to others in the Goulburn Mulwaree Council area, it has the potential to create a large disaster for its neighbours.

20) For the above reasons I am totally opposed to this quarry development.

W J Kenchington

Member of Marulan Quarry CCC

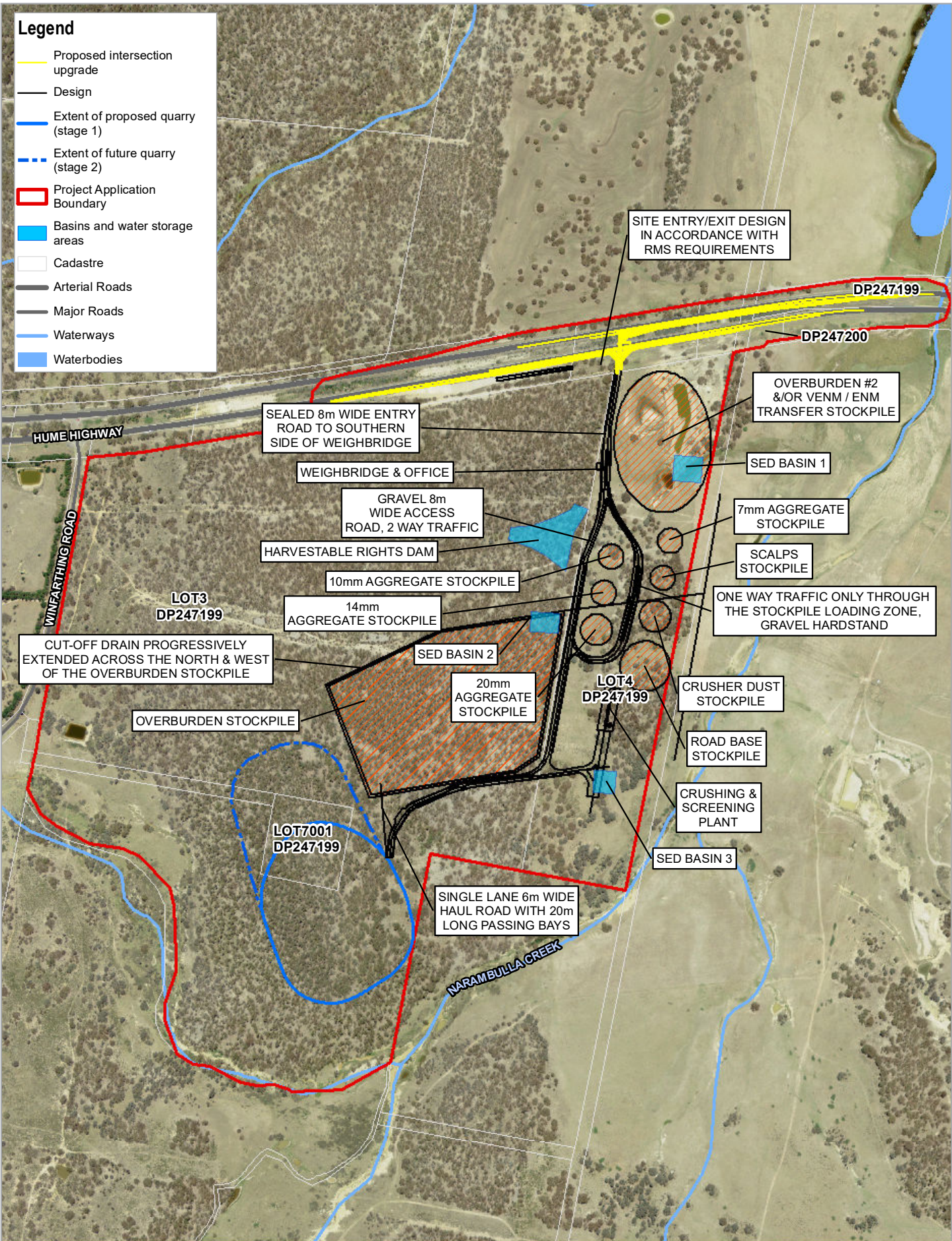
17 January 2022





### Legend

- Proposed intersection upgrade
- Design
- Extent of proposed quarry (stage 1)
- - - Extent of future quarry (stage 2)
- Project Application Boundary
- Basins and water storage areas
- Cadastre
- Arterial Roads
- Major Roads
- Waterways
- Waterbodies



SITE ENTRY/EXIT DESIGN IN ACCORDANCE WITH RMS REQUIREMENTS

DP247199

DP247200

OVERBURDEN #2 & OR VENM / ENM TRANSFER STOCKPILE

SED BASIN 1

7mm AGGREGATE STOCKPILE

SCALPS STOCKPILE

ONE WAY TRAFFIC ONLY THROUGH THE STOCKPILE LOADING ZONE, GRAVEL HARDSTAND

CRUSHER DUST STOCKPILE

ROAD BASE STOCKPILE

CRUSHING & SCREENING PLANT

SED BASIN 3

SINGLE LANE 6m WIDE HAUL ROAD WITH 20m LONG PASSING BAYS

SEALED 8m WIDE ENTRY ROAD TO SOUTHERN SIDE OF WEIGHBRIDGE

WEIGHBRIDGE & OFFICE

GRAVEL 8m WIDE ACCESS ROAD, 2 WAY TRAFFIC

HARVESTABLE RIGHTS DAM

10mm AGGREGATE STOCKPILE

14mm AGGREGATE STOCKPILE

SED BASIN 2

20mm AGGREGATE STOCKPILE

OVERBURDEN STOCKPILE

CUT-OFF DRAIN PROGRESSIVELY EXTENDED ACROSS THE NORTH & WEST OF THE OVERBURDEN STOCKPILE

LOT3 DP247199

LOT4 DP247199

LOT7001 DP247199

HUME HIGHWAY

WINFARTHING ROAD

NARAMBULLA CREEK





# Social Impact Assessment (SIA)

→ Marulan Quarry



# The SIA Team



**Lauren  
Harding**

**Technical Lead - Social  
Sustainability Technical Director**



**Jahni  
Glasby**

**Senior Social Sustainability  
consultant**



**Sonya  
Pascoe**

**Social Sustainability Consultant**



# Social Impact Assessment Guideline

↳ Department of Planning, Industry and Environment (2021)

- Released in 2021
- Applies to State Significant Projects
- Sets out a framework to identify, evaluate and respond to social impacts



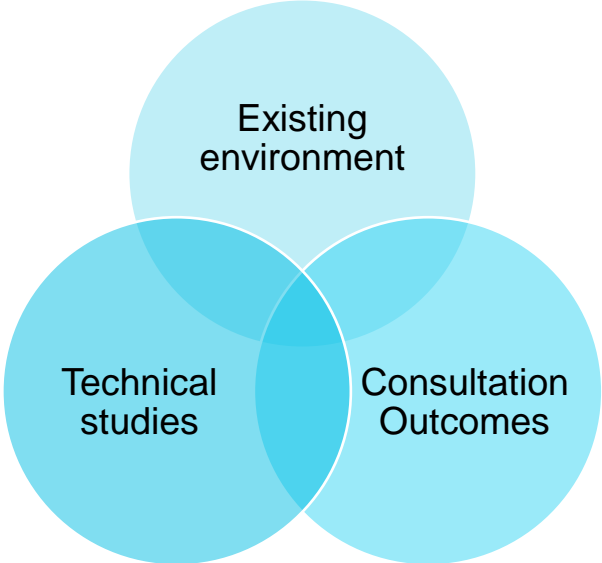
## Social Impact Assessment Guideline

For State Significant Projects  
July 2021



# Purpose of SIA:

Identify, predict and evaluate likely social impacts arising from a project and propose responses to the predicted impacts



Triangulation method to assess benefits and impacts

SIA Scoping Report (2019)

- Submitted with Preliminary Environmental Assessment (PEA)
- Focused on understanding local area and communities, outcomes from consultation in 2019, scope of potential social benefits and impacts

Social Impact Assessment (Now)

- Refine understanding of local area and potential social issues
- SIA specific consultation
- Review findings from other technical studies and project community engagement
- Assess social impacts
- Recommend mitigation and enhancement measures

# SIA specific consultation

## Interviews with:

- Local government
- Emergency services
- Business chamber
- Local Aboriginal Land Council
- Local community members



Build on previous community and stakeholder engagement activities



Confirm and inform the social baseline



Understand community concerns and how people expect to be affected



Discuss potential mitigation and management measures and opportunities

# Discussion

- How would you describe the local communities in and around the project site
- What are some of the current issues in the communities surrounding the project site that we need to be aware of?
- Are there local residents and businesses who could be involved in construction activities?
- Thinking about the updated project designs presented earlier can we get your views on any issues for surrounding properties?





**\* Thank You**